

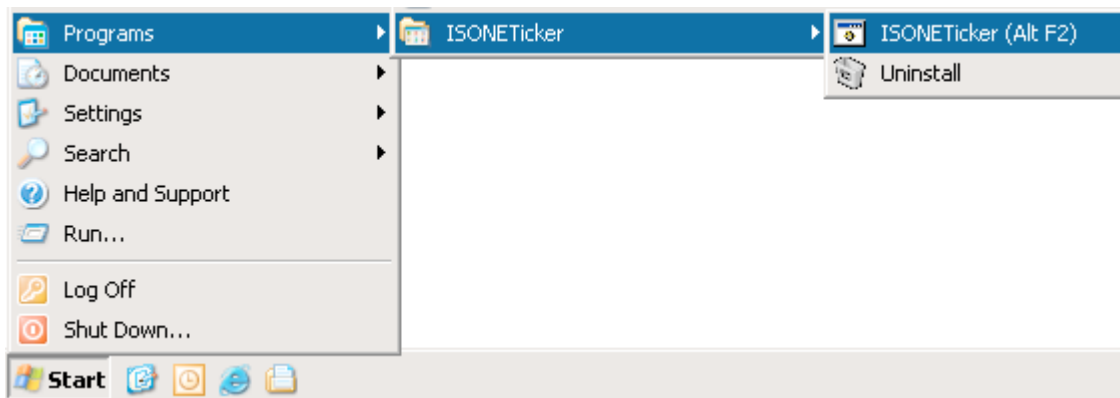
neData Stand Alone Ticker User Guide

The ticker provides five-minute Locational Marginal Prices (LMP) for the Hub and Zones and External Nodes. Users have the choice of viewing the LMP and each component or just the LMP. The following is an example of the display:

```
H.INTERNAL_HUB: Energy: $48.09 Congestion: $0.00 Loss: $0.56 LMP: $48.65    ..HQHIGATE120 2: Energy: $48.09 Congestion: $0.00 Loss: $-3.10
```

Accessing and Adjusting the Stand Alone neData Ticker

Upon successful installation of the neData Stand Alone Ticker, the ISONE Ticker will be added to your program list. To start the ticker, click on the **Start** button and navigate **Programs** to the **ISONETicker**. The ticker now populates the top of the desktop.

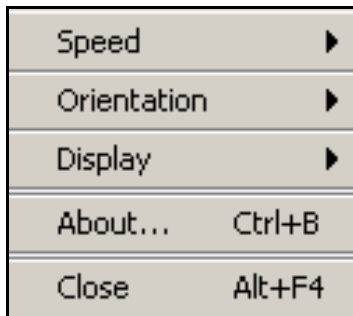


The tickers speed, orientation and display can be adjusted to the following settings:

- **Speed:** Slow, Medium or Fast (default = Medium)
- **Orientation:** Tall or Narrow (default = Tall)
- **Display:** All or LMP (default = All). This displays the LMP and each component

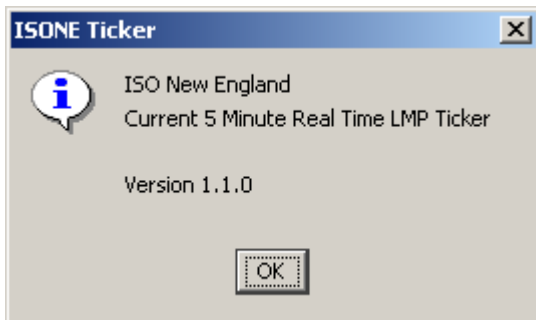
To change the default settings, move the mouse to any point within the ticker and right click your mouse button. *Note: Changes are in effect for current session only.*

A pop up box displays:



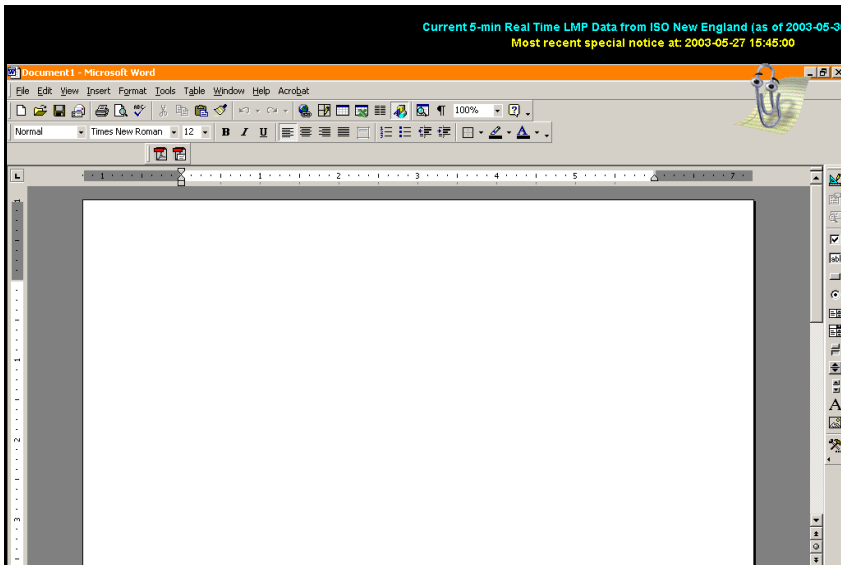
To change a specific setting, move the mouse over the setting to be changed and the available settings will display. Select the setting and the new setting will automatically occur and the box will close.

To view the ISONE Ticker Version you are currently running, click on the **About** button. A pop up box displays:

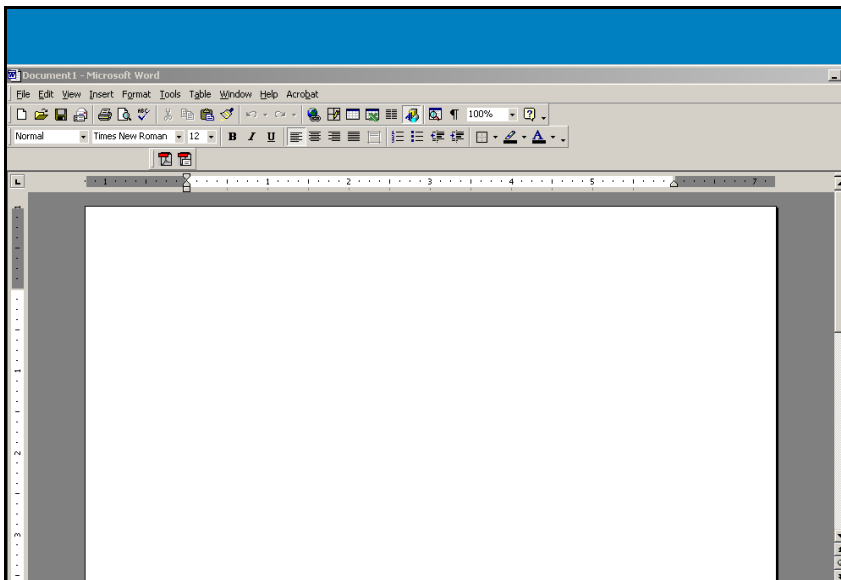


If experiencing problems, please reference your Version # before contacting Customer Service.

To stop the ISONE Ticker from displaying on your desktop, click on the Close button. Please note that you should **ALWAYS** close the ISONE Ticker via the popup display box shown above. The ISONE Ticker is set up to automatically accommodate space for both the Ticker and other running applications such as Microsoft Word, PowerPoint, etc. See Display below:



This prevents the Ticker from running on top of applications. If you close the Ticker from the Toolbar menu, the space that was allotted for the ticker will remain, even after the Ticker is closed. See Display below:



If you inadvertently close the Ticker from the Toolbar menu, open the Ticker again, select Close from the popup display box, and your desktop will return to normal.